

Surf Life Saving
Far North Coast Branch
Pre Season
Lifesaving Presentation
2023 Season



Far North Coast Branch – Lifesaving

David Rope - Director of Lifesaving



Mobile: 0433355563



Email: dir.lifesaving@surflifesavingfnc.com



Who is Responsible for What?

Branch Director of Lifesaving;

- Local Government Liaison, Liaison with SLSNSW and other stakeholders, advocacy for Far North Coast Branch and our Clubs, escalation point for Lifesaving and Support Operations matters.
- Patrol Operations, Standards and Compliance.

Branch Emergency Services Officer;

- Management of the Support Operations Group including Duty Officers and RWC's.
- The emergency response capability across the Far North Coast Branch.

Patrolling Chain of Command

Patrol Captain is in charge of their Beach's operations.

Patrol Captain to notify Club Captain / Club President and Branch Duty Officer of any issues that need to be resolved – ie. Unable to fulfil Patrol Obligations etc.

(SurfCom will automatically contact the on call Duty Officer)

Escalate to Branch Director of Lifesaving for major issues or issues not immediately rectifiable.

DO NOT SELF TASK TO ANY INCIDENT.



Patrolling Patrol Teams

- Full patrol uniforms as per Standard Operating Procedures.
- Operations App Sign On & Off – PREFERRED.
 - SurfCom will contact each Club for radio check only starting from northern club working their way south.
- SurfCom Sign On & Off
 - Remember, if by radio, only need:
 - Sign ON:
 - Beach Status (Open / Closed), Remember if Beach Closed – why?
 - IRB Status (If not operational when it can be expected to be back online).
 - SSV Status (If not operational when it can be expected to be back online).
 - Number of Patrolling Members.
 - Sign OFF:
 - Only require rescue total for the day (no preventative actions etc.)
- Patrol team on the beach and proactive.



Patrolling Patrol Teams

- Patrol strength minimum as per Club's LSA. Minimum of three bronze medallion holders including the following proficient award holders;
 - Patrol Captain V2022 or SMBM,
 - IRB Driver,
 - IRB Crew,
 - ART or ART (AID)
- **Members only signed onto patrol if present on the beach.**
- **Equipment on Beach**
 - Patrols are fully operational from the commencement to closure of rostered patrol hours.
 - IRBs sign on & ready to go when patrols sign on.
 - IRBs are on the beach and rescue ready at all times, including Foul Weather Patrols.
 - Rescue boards, Rescue tubes, patrol shelters / tents, first aid kit, oxy viva and AED with other required patrolling equipment.



Remember

- Any variation to normal patrol operations to be advised to SurfCom.
- Patrol strength to be maintained at all times in accordance with LSA.
- Patrolling members with relevant awards on beach when persons are in the water.
- IF THE APP STOPS WORKING – PLEASE REVERT TO RADIO AND PAPER LOGS and Notify SurfCom.
- Log a ticket with SLSA IT on their website for any feedback.
- **RADIO READABILITY SCALES, as per PSAR35;**
 - **Loud and clear** - *Can receive and understand transmissions.*
 - **Unreadable** - *Can receive but cannot understand transmissions.*
 - **Nothing heard** - *No transmission received.*



Patrolling – Beach Closures

PSSOP 8.1 BEACH CLOSURE & EVACUATION

Patrol Captains should consider “closure” at any time that there is an unacceptable / unmanageable risk to the public or the lifesaving service is unable to effectively safely perform water safety tasks.

The following are specific conditions under which ‘closure’ may be considered (this list should not be considered exclusive):

Dangerous Surf Conditions	Heavily Dumping Surf
	Large Surf
	Rips/Strong Currents
	Debris
Marine Life	Sharks
	Excessive Stingers
Human Hazard	Uncontrollable Surf Craft Infringements
	Powercraft Hazards
Civil Disturbance (public unrest, criminal activity etc.)	
Equipment in Surf/Swimming Area (lines, netting, buoys, etc.)	
Environmental/Weather	Lightning
	Cyclonic conditions
	Tsunami warning
Chemical/Biological Hazard	High pollution levels
	Chemical spill
	Oil/petrol spills
	Biological agent(s)
Other	Dangerous objects (such as munitions)
	Suspicious packages



Patrolling –Beach Closures

EMERGENCY BEACH CLOSURE PROCEDURE

1. Determine if water area is to be evacuated.
2. Log the beach closure through the Operations App (where available) and inform SurfCom via radio on channel 3 that you are about to close the patrolled area and the reason for closing.
3. Activate the Emergency Evacuation Alarm.
4. Inform everyone of the following:
 - Water area is being closed; and
 - Reason for closure.
5. Lower and remove the red and yellow patrol flags and black and white surfcraft flags.
6. Post 'Swimming Not Advised' signs at identified beach access points and where the flagged area was located.
7. Continually monitor all areas.
8. Maintain minimum personnel, qualification and equipment requirements.
9. Maintain an active presence on the beach to advise / warn public.
10. An appropriate record should be made in the Operations App / patrol log giving an outline of the incident.
11. Where required liaise with Emergency Services.



Patrolling –Beach Closures

Emergency Evacuation Alarm – Procedures

Emergency evacuation of a patrolled area: Alarm is sounded continuously until everyone has exited the water.

All Clear / Beach Open: Announcement is made over the loud hailer / PA system. Where an announcement system is not available a short blast of the alarm can be sounded.

Closure Periods

The beach is to remain closed until such time as the identified hazard is controlled or no longer presents a risk.

Recommended closure periods include:

- Dangerous surf conditions (as determined / appropriate).
- Shark sighting & encounters (Refer to PSS 8.5).
- Chemical / biological hazards – after confirmation from appropriate authorities that the area is safe.

Reopening Procedure

- Once it is determined that it is safe to reopen the beach, normal patrol procedures should be re-established under the direction of the Patrol Captain. The beach opening should be logged through the Operations App (where available) and SurfCom informed via radio on channel 3.



Types of Patrols (As per the PSS SOPS 2023)

Core Patrols

Sub-Patrols

Base Patrol *A Base Patrol covers the primary and secondary patrolling areas for a lifesaving service established at all times and dates as identified in the Lifesaving Service Agreement. A Base Patrol must meet all minimums for personnel and equipment as stated below to have a status be considered 'beach open'.*

Inclement Weather *An Inclement Weather Patrol is a 'downgraded' Patrol, operated when services are exposed to extreme or poor weather conditions, irrespective of the surf conditions. The purpose of an Inclement Weather Patrol is to ensure the welfare of the patrolling members and may be temporary in nature.*

Beach Closed *A Beach Closed Patrol is a Base Patrol with a closed swimming area. The swimming area may be closed for situations such as dangerous conditions or an emergency. This indicates that a swimming area is not safe for the general public. A Beach Closed Patrol includes all minimum personnel and all minimum equipment with the exception of patrol flags.*

Surveillance *A Surveillance Patrol is executed when minimum personnel requirements cannot be met for any reason. In this situation available members are required to stay at the beach for the duration of the rostered hours and monitor swimmers. Flags are not erected. SurfCom and the Duty Officer must be informed immediately and additional personnel sought wherever possible to return the beach to Open status.*

**Surveillance Patrol does not meet LSA Minimum requirements and needs to be rectified ASAP.
Contact Club Captain and Branch Duty Officer through SurfCom for assistance.**

Club Lifesaving Operational Areas

As per your Club's Lifesaving Service Agreement, Clubs have a Primary Response (Patrol Area) and a Secondary Patrolling Area.

Club DoL / Club Captains should ensure that patrols are aware of their response areas.

This information should also be contained in the Clubs Patrol Operations Manual.

Patrols should wait until tasked by SurfCom or a Duty Officer before responding to an incident outside of their patrol area.

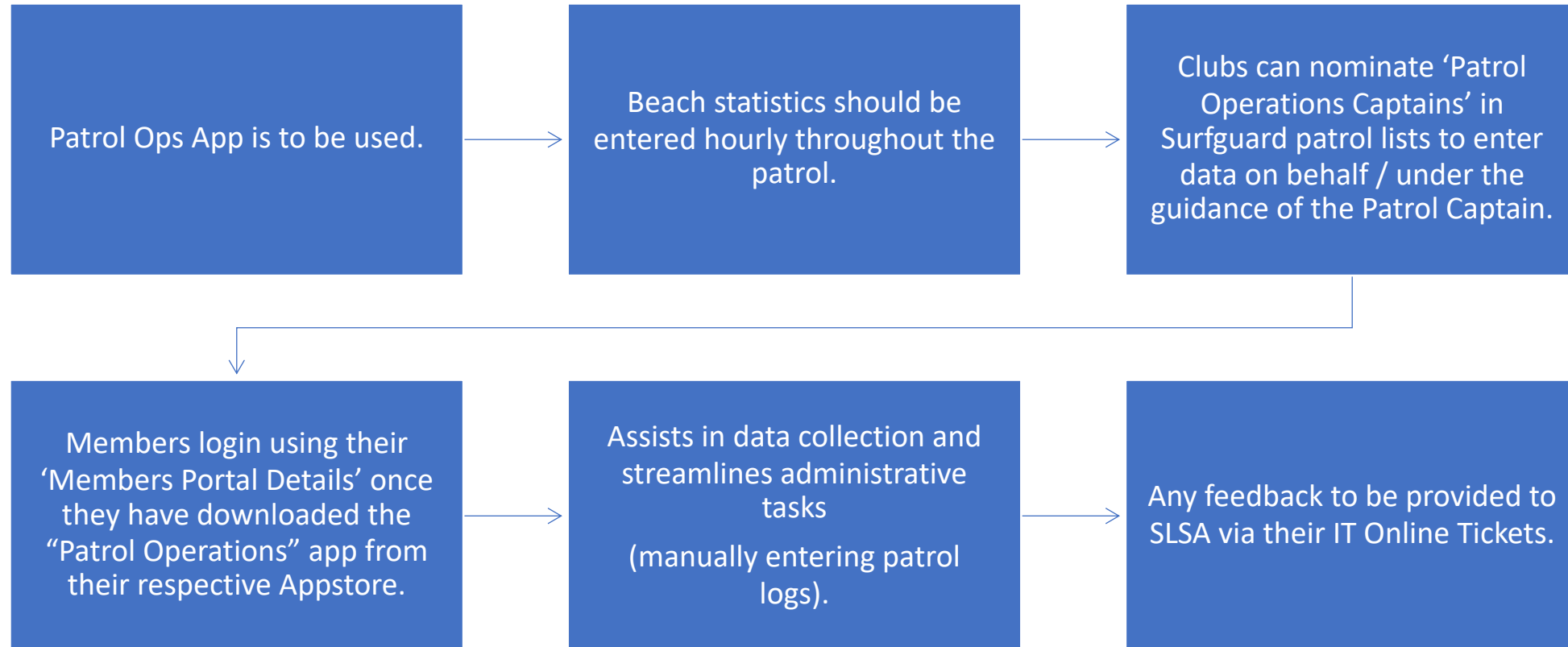


Extension of Patrolling Hours

- Patrol Captains should consider risk to the bathing Public at sign off time.
- Patrol Captains may decide to stay on past their normal sign off time due to increased bathing numbers.
- If possible, please advise SurfCom if that is your intention at least 30 minutes prior to your rostered sign off time.
- SurfCom will notify the appropriate Branch Duty Officer.



Patrol Operations App



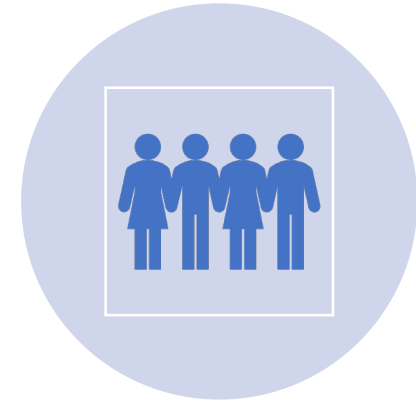
Key Areas of Focus for 2023 Season



FOCUS ON MAINTAINING A PRESENCE
ON THE BEACH



FOCUS ON PROVIDING BEST PRACTICE
SERVICE LEVELS



FOCUS ON MEMBER WELFARE AND
SUPPORT SERVICES TO ALL MEMBERS

Key Areas of Focus for 2023 Season

Member Safety:

- A reminder regarding all incidents that if a member has suffered an illness or injury while performing authorised surf lifesaving activities, Workers Compensation may be available. There have been instances where incident forms or this process has not taken place and should have. In addition, where required a debrief should occur after a major incident and if required can be facilitated by a Branch representative. Member welfare is a high priority and includes services such as EAP and activation of a Member Welfare officer.
- Any member injury during any Surf Life Saving activity whereby a member is hospitalised either via an ambulance or not, SurfCom should be notified and a Branch Duty Officer should attend.



Key Areas of Focus for 2023 Season

IRBS

- Remind your Club IRB Operators about the power craft code of conduct.
- Throttle recoil devices have recently been dispatched to Clubs by SLSA. The devices should be fitted for safety reasons to all motors. In conjunction, the move away from toggle style kill switches and reverting back to standardised hybrid kill switches with lanyard.
- Remember, ALL power craft collisions as well as power craft incidents that result in member injury are reportable to Transport NSW and require a formal investigation.
- PFDs have been compulsory since 2014.
- PFDs must be worn at all times including outside the patrolling area / break zone.
- IRBS MUST SIGN ON & OFF WITH SURCOM WHEN THEY ARE ON THE WATER FOR ANY REASON.
(This assists with tasking of closest assets to incidents)



Patrolling – Patrol Members

Member Proficiencies & Up Skilling

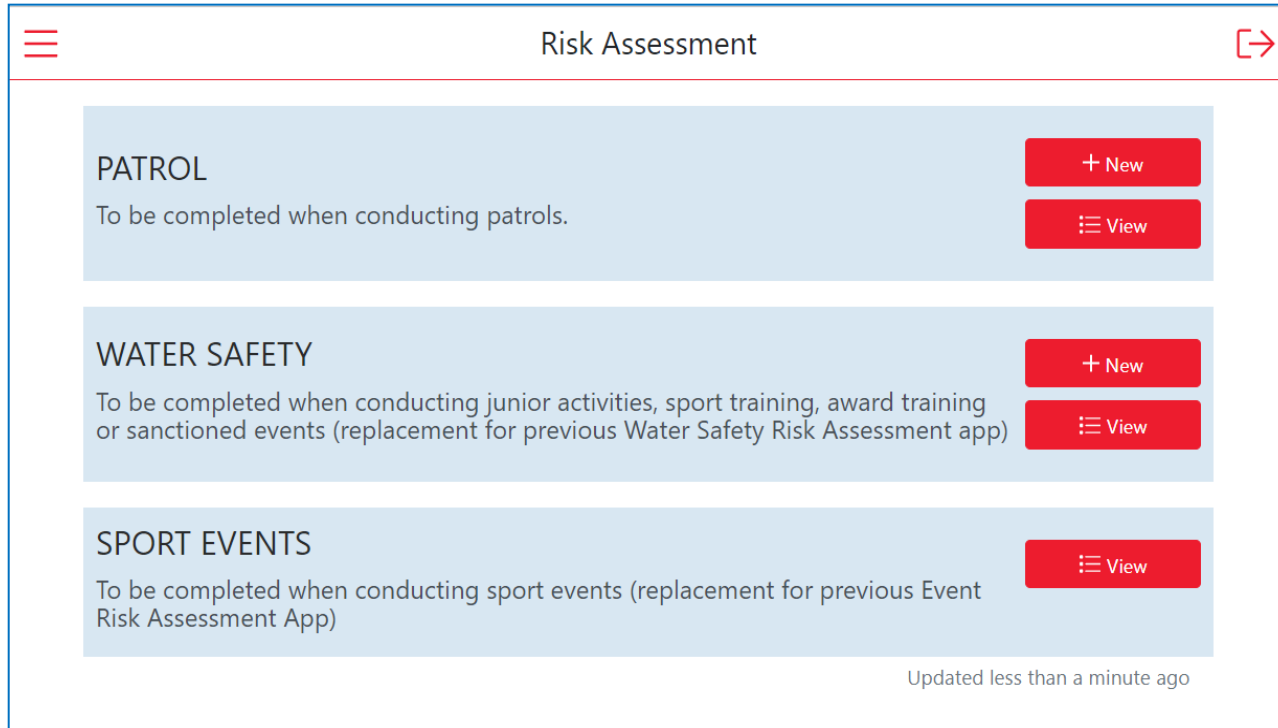
- Skills Maintenance (Proficiencies) are to be completed by 31 December 2023.
- If patrolling members not proficient in a patrolling award by 31 December 2023 they cannot patrol. This is the Club's responsibility to identify and advise relevant members and their Patrol Captains as required.

Public Perception

- Remember that all Lifesavers represent their club and the organisation when on patrol.
- Lifesavers on patrol are to be available to Patrol Captain at all times during rostered duty.
- Mobile phone usage should be kept to a minimum.
- Remember to maintain a professional image at all times whilst on patrol.
- Patrol Uniforms should not be worn outside of patrol hours – including to and from the beach.



SRR Rating App



Risk Assessments need to be done for the following activities;

- Prior to opening a patrol.
- All Junior Activity Events including training.
- All member award training.
- All surf sports training.

SRR App is the preferred method.

If you don't have access to the additional Risk Assessment functionality in the Operations App, complete the eLearning module in your members portal. Access will be automatically given when the SLSNSW database syncs weekly with the SLSA database.

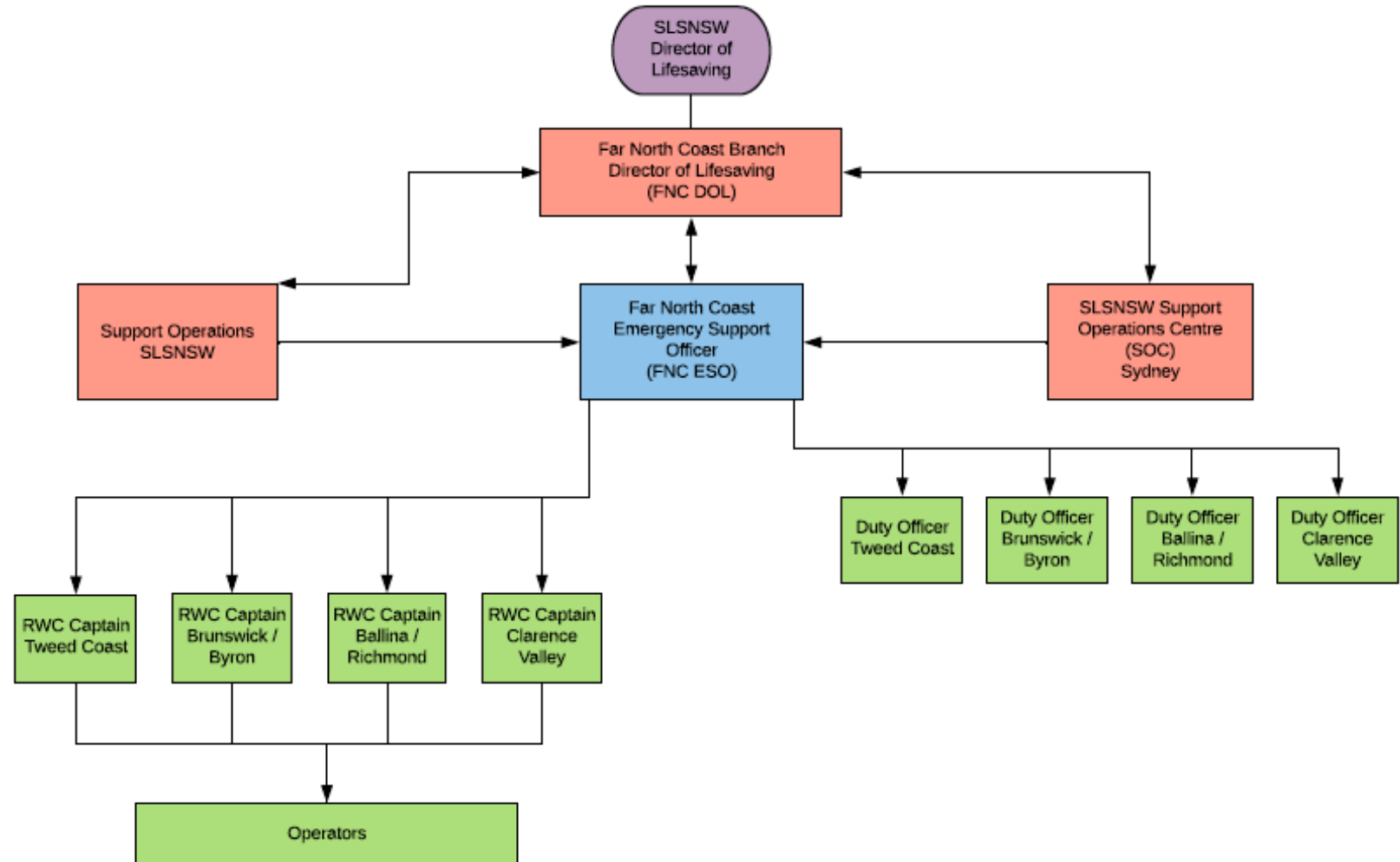


FNC Branch Support Operations Group

- FNC Branch SERS (Surf Emergency Response System)
 - One Point of Contact 24/7/365
 - Mobile **0432 217 500** (Number will call flow to next on call backup Duty Officer, please don't text number as will not call flow)
 - Email: emergency@surflifesavingfnc.com
- FNC Branch Emergency Services Officer
- Branch Duty Officers
- Rescue Water Craft (RWCs)
- UAVs
- Peer Support (EAP / Operational & Emotive Debrief)



Far North Coast Support Operations Structure



SERS -Surf Rescue Emergency Response System

Emergency Response System for Surf Life Saving across the State.

- 13SURF (For use by external emergency service agencies only)
- On Call Branch ESO and Backup ESO who are responsible for tasking FNC Branch assets in conjunction with the State Duty Officer / SurfCom.
- May include;
 - Duty Officers
 - RWCs
 - UAVs
 - Club Emergency Call Out Teams



FNC Branch Duty Officers and Locations

All “PUAOPE012A” - Control a Level 1 Incident Qualified.

- **FNC Branch ESO Jimmy Keough**
- **FNC Branch Rostered ESO – FNC 10**
- **Tweed Coast**
 - Chris Samuels - Tweed 11
 - David Rope – Tweed 12
 - Andrew Mills – Tweed 13
 - Matthew Bell – Tweed 14
- **Brunswick / Byron Bay**
 - Roger Beadman – Byron 11
 - Dan Andrew – Byron 12
- **Ballina (Also Evans Head)**
 - Garry Meredith – Ballina 11
 - Todd Muller – Ballina 12
- **Clarence**
 - Peter Sweetman – Clarence 11



FNC Branch Duty Officers

RESPONSIBILITIES

- Act as the Forward Commander for all Surf Life Saving assets at any emergency incident.
- Manage all FNC Branch surf lifesaving requests from the 13SURF Emergency Response System, SurfCom and external agencies.
- Conduct Critical Incident Debriefs for all surf lifesaving assets involved in any emergency incident or when associated with serious injuries.
- Manage media at a major incident.
- Monitor Work Health and Safety of all surf lifesaving personal whilst undertaking activities.



FNC Branch Duty Officers

Working with duty officers, what will they do when they arrive at your beach?

- Duty Officers wear RED shirts! They are not there to conduct patrol audits.
- Introduce themselves to the Patrol Captain / other stakeholders.
- Obtain a SITREP from the Patrol Captain.
- **ASSIST** the Patrol Captain to manage the incident, the Duty Officer is not there to take over unless requested to do so.
- Liaise with other Emergency Services.
- ASSIST with Incident Management, Media, Debriefing etc.
- Duty Officers can be requested by a Patrol for assistance at any time if required through SurfCom.



FNC Branch Duty Officers

A Duty Officer will be dispatched to:

- Out of Hours Callouts.

Major Incidents during Patrol Hours including:

- Drowning / Near Drowning,
- Missing Persons,
- Major First Aid Cases,
- Incidents involving other Emergency Services
- Any incident involving as well as any other Incident deemed high-risk or newsworthy.



Media - Major Lifesaving Incidents

Only the Branch Emergency Services Officer, Branch Director of Lifesaving or Branch President can make statements regarding a major Lifesaving Incidents within Far North Coast Branch.

SLNSW Media Manager

- Deaths / Drowning's / member Injuries / accidents issues / state / national safety and funding issues

Branch President / Branch Director of Lifesaving / Emergency Services Officer

- Branch issues / Stats / programs / Initiatives
- Major Rescues / Incidents
- Local Council Issues / SLS Issues

Club President / Club Director of Lifesaving / Club Captains

- Club Stats / Safety Issues / events / programs

Club Patrol Captains

- Beach Conditions / Activity / General Information



RWC Area Captains

- **Tweed Coast**
 - Gary Raso
- **Brunswick / Byron Bay**
 - David Griffiths
- **Ballina**
 - Terry Mortimer
- **Clarence**
 - Roger Varcoe



RWC's Areas of Operation

8 RWC Sites (1,540 patrol hours across 2022 season).

All Branch Operated RWC's are attached to Lifesaving Service Agreements.

- Tweed Support Ski 1 - Cudgen Creek patrols from Cudgen Creek to Kirra, Qld.
- Tweed Support Ski 2 - Cudgen Creek patrols from Cudgen Creek to Black Rocks.
- Cudgen Headland Surf Club, ALS - Kingscliff Support Ski. (Emergency Response purposes)
- Brunswick Support Ski - Brunswick, South Golden Beach to Cozy Corner (Tallows Beach)
- Byron Bay Surf Club, ALS - Byron Support Ski. (Emergency Response purposes)
- Lennox Head Surf Club, ALS – Lennox Support Ski. (Emergency Response purposes)
- Ballina Support Ski - Ballina, patrols from North end Seven Mile Beach to South Ballina Beach.
- Clarence – Support Ski - Clarence, patrols Iluka Beach to Brooms Head.



Club Emergency Call Out Teams

Should be rescue ready.

- Activated by SurfCom / On-Call Branch Duty Officer / ESO.
- Tasking may include;
 - Land searches
 - In water searches
 - Relief for other teams at incident
 - Relief for patrols after a major incident
- Club to have their emergency call out team updated in SurfGuard in the SurfCom messaging field.
- Minimum of 18 years of age or as determined by your Club for older age.
- Rescue equipment should be **“Rescue Ready”** and accessible (Radios, Rescue Boards, Rescue Tubes, IRBs, SSV’s, Oxy, AED, First Aid etc.)
- Minimum 6 Members entered into SurfGuard (as per Annual Compliancy requirements). Enter as many reliable members as possible. They must have access to the club and must live within a reasonable distance from the club to enable a quick response. They also must hold as many awards as possible to allow for a diverse and wholesome ability when attending an incident – SSV driver, IRB driver, IRB crew, ART, First Aid etc.



Club Emergency Call Out Teams

- It is suggested that call out team members should have the following gear and equipment available with them so they can respond quickly from any location to a callout:
 - Dry Bag (to take items in IRB) + Separate bag for dry clothing etc upon return (Car keys, towel, warm clothes).
 - Non-perishable snacks (for prolonged searches etc)
 - Wetsuit, Booties, Gloves other PPE.
 - Spare 'Surf Rescue' uniform for land searches including enclosed shoes & socks.
 - Warm change of clothing / towel.
 - Water bottle to fill prior to departure.
 - Access / keys to IRB, First Aid and any other Gear Equipment rooms.
 - Mobile phone with waterproof pouch (backup for communications etc)



Far North Coast Branch UAV'S



David Field



Far North Coast Branch



Volunteer UAV Co-Ordinator



Mobile: 0421696240



Email: uav@surflifesavingfnc.com



UAV DPI Contract

Below is the proposed period where AUAVS will work with Clubs to provide a paid Pilot / Operator to deliver the following service;

(Clubs can enter an agreement with AUAVS If your Club wishes to do this, please provide AUAVS with a list of volunteer UAV Operators and AUAVS will then be in touch with your Club with further information to ensure all required service points are addressed.)

- 2x 20min flights per hour, within weather limitations, between 0845 and 1615 hours.
- Winter 1 to the 17 July 2023
- Spring 23 September to 8 October 2023
- Summer 21 December 2023 to 29 January 2024
- Autumn 13 to the 28 April 2024



UAVs

- Most FNC Branch Clubs now have their own volunteer UAV Coordinator.
- Most FNC Branch Clubs now have a volunteer UAV qualified trainer.
- All FNC Branch Clubs have minimum one UAV asset allocated by SLSNSW AUAV Service.
- All UAV use falls under the AUAV SOPS and CASA Regulations.
- UAVs associated with emergency response fall under the Branch Support Operations Group and AUAV Service.



SurfCom

Located at Belrose (SLSNSW)

Operational Hours through 2023 / 2024 Season

Monday 18 th September 2023	0700hrs to 1800hrs	7 days a week
Monday 27 th November 2023	0700hrs to 1900hrs	7 days a week
Monday 26 th February 2024	0700hrs to 1800hrs	7 days a week
Monday 4 th April 2024	0700hrs to 1700hrs	7 days a week



Contact Details

General: 02 9471 8092 (Only call if requested to do so)

Emergency: 02 9471 8091 (Only call if requested to do so)

Any questions contact ?

David Rope

Branch Director of Lifesaving

Mobile: 0433355563

Email: dir.lifesaving@surflifesavingfnc.com

